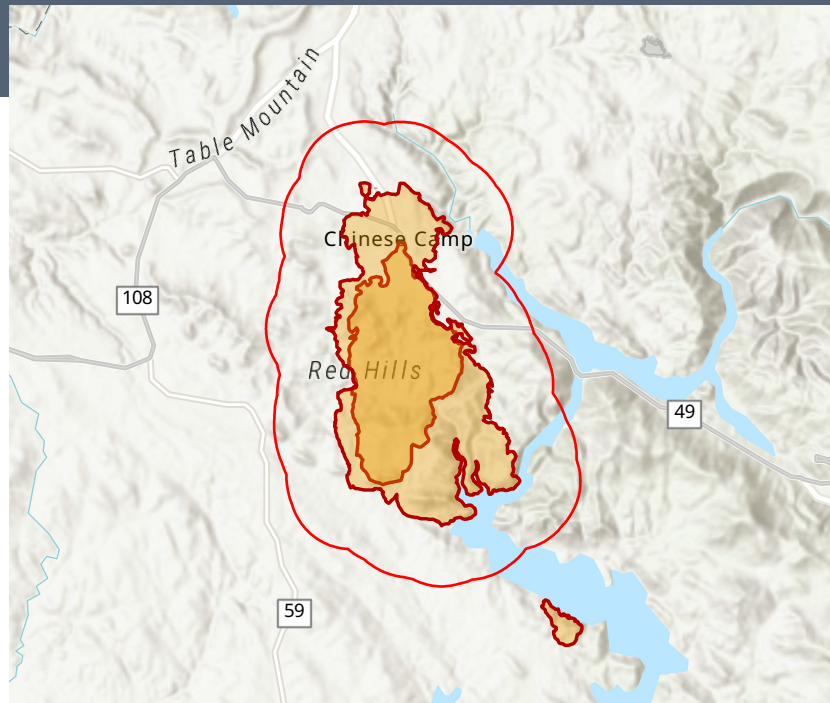




6-5 Incident



Year Structure Built	
Built: 2020/Later	2
Year Built: 2010-2019	5
Year Built: 2000-2009	21
Year Built: 1990-1999	19
Year Built: 1980-1989	5
Year Built: 1970-1979	39
Year Built: 1960-1969	19
Year Built: 1950-1959	26
Year Built: 1940-1949	10
Year Built: 1939 or Earlier	26

2018-2022 Heating Fuel	
Utility Gas	4
Tank/LP Gas	46
Electricity	40
Oil/Kerosene	8
Coal/Coke	0
Wood	52
Solar Energy	10
Other Fuel	0
No Fuel	0

308

Population

154

Total Households

1.81

Avg Size of Household

18.4%

Unemployment Rate

46.4

Median Age

247

Household Has Internet Access

129

Household Owns Computer

224

Daytime Population

24

Number of Veterans

2

Total Businesses

17

Total Employees

36

White Collar Workers

37

Blue Collar Workers

19

Service Workers

Workforce

At Risk Population



88

Households With Disability



81

Population 65+



3

Households Without Vehicle



School Enrollment

0

Nursery & Preschool

2

Kindergarten

5

Grade 1-4

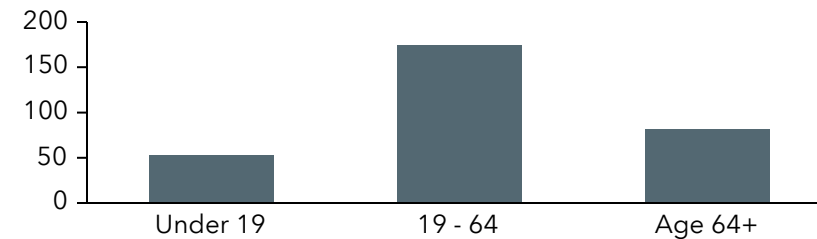
22

Grade 5-8

14

Grade 9-12

Population By Age



Language Spoken	Age 5-17	18-64	Age 65+	Total
English Only	28	146	71	245
Spanish	13	29	3	45
Spanish & English Well	13	21	2	36
Spanish & English Not Well	0	8	0	8
Spanish & No English	0	0	1	1
Indo-European	0	0	2	2
Indo-European & English Well	0	0	2	2
Indo-European & English Not Well	0	0	0	0
Indo-European & No English	0	0	0	0
Asian-Pacific Island	0	1	0	1
Asian-Pacific Isl & English Well	0	1	0	1
Asian-Pacific Isl & English Not Well	0	0	0	0
Asian-Pacific Isl & No English	0	0	0	0
Other Language	0	0	0	0
Other Language & English Well	0	0	0	0
Other Language & English Not Well	0	0	0	0
Other Language & No English	0	0	0	0